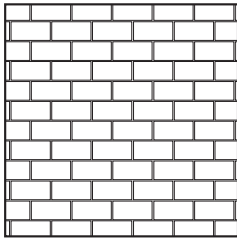
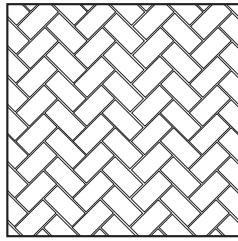


# Pattern Ideas

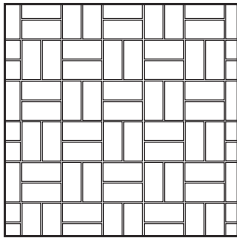
4x8 (3 5/8 x 7 5/8)



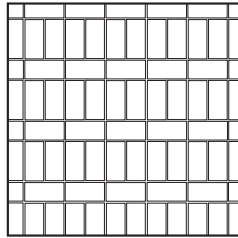
4x8 - Staggered  
(Grout joint - 3/8" or 1/4")



4x8 - Herringbone  
(Grout joint - 3/8")

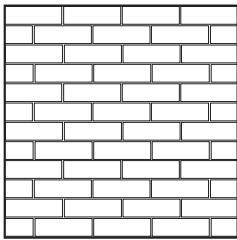


4x8 - Basketweave  
(Grout joint - 3/8")

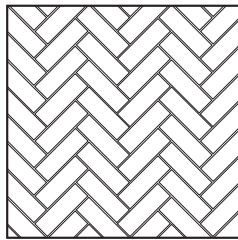


4x8 - Horizontal & Vertical  
(Grout joint - 3/8")

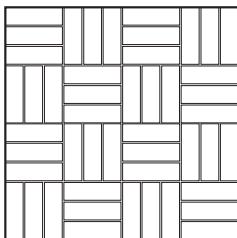
4x12 (3 5/8 x 11 5/8)



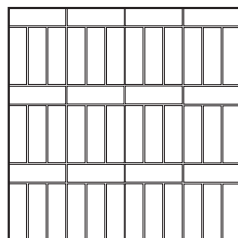
4x12 - Staggered  
(Grout joint - 3/8" or 1/4")



4x12 - Herringbone  
(Grout joint - 3/8")

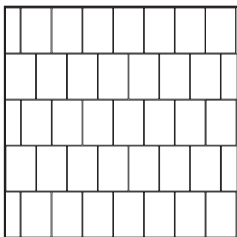


4x12 - Basketweave  
(Grout joint - 3/8")

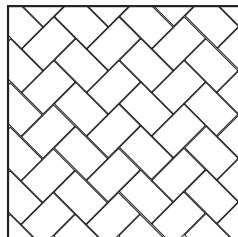


4x12 - Horizontal & Vertical  
(Grout joint - 3/8")

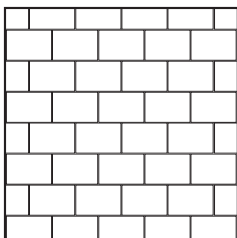
6x9



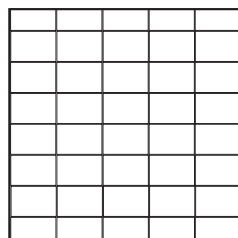
6x9 - Staggered (tall)  
(Grout joint - 3/8" or 1/4")



6x9 - Herringbone  
(Grout joint - 3/8")



6x9 - Staggered  
(Grout joint - 3/8" or 1/4")



6x9 - Stacked  
(Grout joint - 3/8" or 1/4")

# Size & Color Options

Red Paver 350



Stone 6x9



Slate 4x12 (3 5/8 x 11 5/8)



Velour 4x8 (3 5/8 x 7 5/8)

Desert Floor 255



Stone 6x9

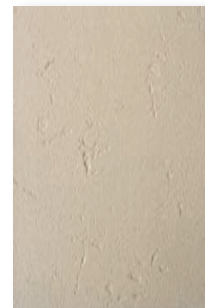


Slate 4x12 (3 5/8 x 11 5/8)

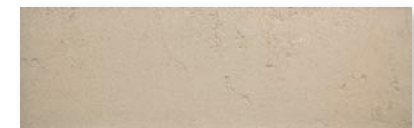


Velour 4x8 (3 5/8 x 7 5/8)

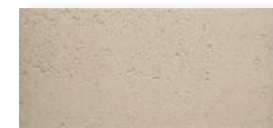
Cobblestone 155



Stone 6x9



Slate 4x12 (3 5/8 x 11 5/8)



Velour 4x8 (3 5/8 x 7 5/8)

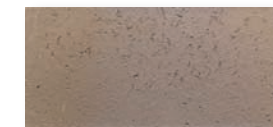
Bedrock 458



Stone 6x9



Slate 4x12 (3 5/8 x 11 5/8)



Velour 4x8 (3 5/8 x 7 5/8)

Some Patterns require a 3/8" grout joint. Because of the square edge of Down to Earth, you may choose to use a tighter joint (1/4") where applicable.

**Down to Earth**  
Traditional Tile for the Home